

Corporate Membership Scheme

We hope to have the benefit of your support.



Corporate Patrons are central to the success of the Geffrye Museum, providing a vital alternative source of income which helps fund major projects and some of the core activities of the museum such as educational work, mounting special exhibitions and acquiring important objects for the collection.



Recent Acquisitions include 'The Appointment' by Rebecca Solomon and 'The Garden at 17 Grove End Road' by James Jacques Tissot

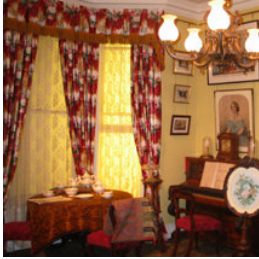
You can become a Victorian, Georgian or Stuart Patron by making yearly contributions of £2,500, £5,000, and £10,000 or over respectively. Your membership is tailored to suit your interests and passions, so that you can become part of the life of the Geffrye.



The Geffrye Herb Garden and Regency Room

Victorian Patron

In return for an annual donation of £2,500 + VAT, the Geffrye Museum offers the following benefits:



- Priority booking of the facilities for meetings, receptions, etc.
- Guided tours of the museum for small groups of employees
- Creative workshops for employees (there will be small charges to cover the cost of materials and specialist staff)
- Opportunities to sponsor specific museum projects
- One invitation to museum private views
- Notice of forthcoming events and exhibitions
- Acknowledgement of your company's support on our corporate literature, as appropriate
- 1 complimentary catalogue per exhibition (as applicable)

Victorian price £2,500 + VAT

Georgian Patron

In return for an annual donation of £5,000 + VAT, the Geffrye Museum offers the following benefits:



- One booking of the facilities at 20% discount
- Priority booking of the facilities for meetings, receptions, etc
- Guided tours of the museum for small groups of employees
- Creative workshops for employees (there will be small charges to cover the cost of materials and specialist staff)
- Opportunities to sponsor specific museum projects
- Two invitations to museum private views
- Notice of forthcoming events and exhibitions
- Acknowledgement of your company's support on the museum's corporate literature
- 2 complimentary catalogues per exhibition (as applicable)

Georgian price £5,000 + VAT

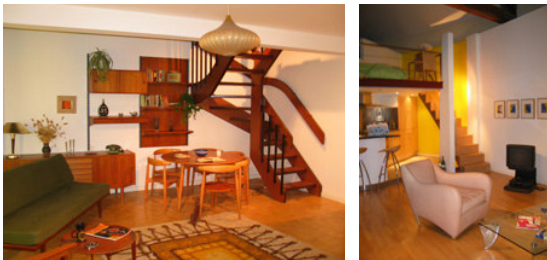
Stuart Patron

In return for an annual donation of £10,000 + VAT or over, the Geffrye Museum offers the following benefits:



- One free booking of the museum's facilities
- One additional booking of the facilities at 30% discount
- Priority booking of the facilities for meetings, receptions, etc
- Guided tours of the museum for small groups of employees
- Creative workshops for employees (there will be small charges to cover the cost of materials and specialist staff)
- Opportunities to sponsor specific museum projects
- Five invitations to museum private views
- Notice of forthcoming events and exhibitions
- Acknowledgement of your company's support on the museum's corporate literature
- 4 complimentary catalogues per exhibition (as applicable)

Stuart price £10,000 or over + VAT



The Mid Century Modern Room and 1990s Room

All enquiries about the Corporate Membership Scheme should be directed to:

David Dewing, Director, The Geffrye Museum, Kingsland Road, London E2 8EA
Telephone 020 7739 9893

To make a separate **Gift Aid** donation please follow the link under Gifts and Donations.